

TM



NARNOO

API

DOCUMENTATION

For Tourism Websites

Videos

Brochures

Images

Agent Portals

Narnoo Platform Overview

Mission

To collect, display and network all aspects of tourism promotional media.

The Narnoo platform is a state of the art, cloud computing based media solution for the tourism and hospitality industry. It's sole purpose is to streamline the process of networking and distributing tourism media, both for tourism operators and tourism markets and distributors.

Built on a backbone of secure, globally distributed servers, you can be assured that your files will be delivered fast and securely, no matter where in the world your users are from.

Why Narnoo

Through our simple 1-click upload and conversion process, you can store, encode and organise your images, videos and brochures.

Integrate into your website dynamic media libraries containing unlimited high-resolution images, HD quality videos and high-resolution brochure PDFs.

Enhance your website by embedding custom designed video players, image slideshows and page turning brochures. All media is automatically converted into the appropriate formats on upload and our simple API makes embedding this content into any site design simple and streamlined.

Future expansion!

Narnoo will continue to create 'plug ins' that interact with the system. This means easy updating of clients websites with the latest multi-media tools.

Document Contents

Narnoo API Documentation Contents

Document Overview

Mobile Content Overview

Video API Code

Brochure API Code

Images API Code

Slideshow API Code

Media Library API Code

Example One - Inline video, brochure, image thumbs (row)

Example Two -Video thumb (open in light box), brochure, image in grid pattern

Example Three -Video icon (open in light box), brochure, image in grid pattern

Example Four -Video Lightbox, brochure light box

Example Five -Media library layout

Example Six - Media library pages

Example Seven - Inline Slide Show

Video Player Settings

Document Overview

Narnoo API Documentation

Overview

The Narnoo API is used to embed media content that has been uploaded and processed via the Narnoo.com service.

Requirements

A Narnoo.com operator account

Embedding content is only allowed on the domain registered for that operator. The operator can add privileges to more domains from the Narnoo portal.

Issues

- * The API code is entered into a site's html in the exact location where the media is to be displayed. This can be within a <DIV> or <TABLE>
- * The Narnoo.com portal displays the appropriate embed codes. However, you can use this documentation to suit your needs.
- * Where desired thumb nail images are produced for images, videos and brochures.
- * All ID numbers can be found on the Narnoo.com portal. For videos, the video ID is emailed to the registered email address once finished processing.

Examples

This document contains a number of examples. These examples show the different number of ways to render the content on a site page. These example pages have basic styling so that the emphasis is on how the content is rendered in a browser window and not the page itself.

Document Overview

Narnoo API Documentation

Mobile Device Display

All embeddable content has alternative **HTML5** accessible content.

This means that our code will automatically output the correct media files depending on the user's browser.

There are **NO** issues with showing the media content across computer web browsers and web browsers on mobile phones and tablets.

Videos

Overview:

The Narnoo API for embedding videos into an operator's website provides the highest level of customisation of all media content in the system. Essentially there are three major ways to embed a video into a site page. This allows the process of embedding a video to adapt to any page design.

The three major embed styles are as follows:

Inline video - Similar to sites like "Vimeo" and "YouTube" where video plays along side content in a site page.

Thumb Image to light box - A thumb image is produced that when pressed opens the video in a light box in the page.

Link Icon to light box - An icon is rendered that when pressed opens the video in a light box in the page.

Example Parameters:

```
<script type='text/javascript'>
narnoo_operatorId = '39';
narnoo_videoId = '190';
narnoo_inPage = 'yes';
narnoo_lightbox='no';
narnoo_domainId = '48';
narnoo_width = '100px';
narnoo_height = '100px';
narnoo_autoStart = "false";
narnoo_op_portal='yes';
</script>
<script type='text/javascript'
src='http://www.narnoo.com/singleEmbed/show.js'></script>
```

narnoo_operatorId (Integer)

This variable is static for each operator's account.

UPLOAD - GRAB CODE -DISPLAY

narnoo_videoId (Integer)

This variable represents the video id. To embed videos into site pages, operators need to upload their own videos into their Narnoo account. The system automatically processes the videos into a streaming video file. Use this video ID to represent the video file. Operators are sent an email with their Video_ID every-time they upload a new video.

narnoo_inPage (boolean)

This variable is used to render a thumb image of the video into the site page. See examples for more details.

narnoo_lightbox (boolean)

This variable is used to determine how the video will appear on the page once a thumb image has been pressed. If the variable is set to 'yes' , than the video will open in a light box. If the variable is set to 'no' , than the video will play in the position of the thumb image. See examples for more details.

narnoo_domainId (Integer)

This variable is static for each operator's account and represents their registered domain URL.

narnoo_width (Integer + px)

This variable controls the width of the video player or thumb size when narnoo_inPage = ' yes'. See examples for more details.

narnoo_height (Integer + px)

This variable controls the height of the video player or thumb size when narnoo_inPage = ' yes'. See examples for more details.

narnoo_autoStart(boolean)

This variable is used to auto start the video in computer media player.

Brochures

Overview:

The simple Narnoo API for embedding a flip book style brochure reader with an image thumb nail, is as follows.

```
<script type='text/javascript'>
narnoo_operatorId= '39';
narnoo_brochureId = '208';
narnoo_light_shade = 'cccccc';
narnoo_dark_shade = '333333';
narnoo_link_url = 'http://www.narnoo.com/signup.php';
narnoo_domainId = '48';
narnoo_op_portal='yes';
narnoo_inPage = 'no';
</script>
<script type='text/javascript'
src='http://www.narnoo.com/singleEmbed/show.js'> </script>
```

narnoo_operatorId (Integer)

This variable is static for each operator's account.

narnoo_brochureId (Integer)

This variable represents the brochure id. To embed brochures onto site pages, operators need to upload their PDF brochures into their Narnoo account. The system automatically processes the PDF's and converts them into this page flipping format. Operators then use the brochure ID code to display their brochures through their site.

narnoo_light_shade (Hex Colour)

This variable is used to set the lighter side of the navigation bar gradient.

narnoo_dark_shade (Hex Colour)

This variable is used to set the darker side of the navigation bar gradient

UPLOAD - GRAB CODE -DISPLAY

narnoo_link_url (Full URL)

This variable is used to create the custom call to action link.

narnoo_domainId (Integer)

This variable is static for each operator's account and represents their registered domain URL.

narnoo_inPage (yes/no)

This variable is used to determine whether an image thumb nail appears.

The first page of the PDF brochure will be rendered as a thumb nail in the position of this code on the page.

This thumb acts as a button that when pressed opens the flip book in a light box on the website page.

Brochures

Overview:

The simple Narnoo API for embedding a flip book style brochure reader inline with the page, is as follows.

```
<script type='text/javascript'>
narnoo_operatorId= '39';
narnoo_brochureId = '208';
narnoo_light_shade = 'cccccc';
narnoo_dark_shade = '333333';
narnoo_link_url = 'http://www.narnoo.com/signup.php';
narnoo_domainId = '48';
narnoo_op_portal='yes';
narnoo_inPage = 'yes';
narnoo_width='850';
narnoo_height='588';
</script>
<script type='text/javascript'
src='http://www.narnoo.com/singleEmbed/show.js'> </script>
```

narnoo_operatorId (Integer)

This variable is static for each operator's account.

narnoo_brochureId (Integer)

This variable represents the brochure id. To embed brochures onto site pages, operators need to upload their PDF brochures into their Narnoo account. The system automatically processes the PDF's and converts them into this page flipping format. Operators then use the brochure ID code to display their brochures through their site.

narnoo_light_shade (Hex Colour)

This variable is used to set the lighter side of the navigation bar gradient.

narnoo_dark_shade (Hex Colour)

This variable is used to set the darker side of the navigation bar gradient

UPLOAD - GRAB CODE -DISPLAY

narnoo_link_url (Full URL)

This variable is used to create the custom call to action link.

narnoo_domainId (Integer)

This variable is static for each operator's account and represents their registered domain URL.

narnoo_inPage (yes/no)

This variable is used to determine whether an image thumb nail appears.

narnoo_width (Integer)

This variable is used to set the width of the embedded brochure.

narnoo_height (Integer)

This variable is used to set the height of the embedded brochure.

The player will keep its correct aspect ratio so as not to distort the brochure pages.

Note: This is a flash based application. You will need to add alternative content if you want to target iDevices on this particular page.

Images

Overview:

The Narnoo API for embedding images into a operator's site is quite simple and easy to manage. The variables can be set, allowing the operator the freedom to customise how the images appear on their site pages.

Example Parameters:

```
<script type='text/javascript'>
narnoo_operatorId='39';
narnoo_albumId = '18';
narnoo_domainId = '48';
narnoo_thumbDisplay='4';
narnoo_thumbColumns='4';
narnoo_slideShow='no';
narnoo_op_portal='yes';
</script>
<script type='text/javascript' src='http://www.narnoo.com/singleEmbed/show.js'></script>
```

narnoo_operatorId (Integer)

This variable is static for each operator's account.

narnoo_albumId (Integer)

This variable represents the image album id. To embed images onto site pages, operators need to upload their own images and create albums of these images. They then use the album code to embed these images into their site.

narnoo_domainId (Integer)

This variable is static for each operator's account and represents their registered domain URL.

narnoo_thumbDisplay (Integer)

This variable controls the number of thumb images rendered onto the site page.

UPLOAD - GRAB CODE -DISPLAY

Example

In example1 we use narnoo_thumbDisplay='4'; The variable '4' means that five images from the album will be render onto the page as thumb images.

narnoo_thumbColumns (Integer)

This variable controls the number of columns that the images are rendered onto the site page. The thumbs can be controlled in a grid format.

Example

In example1 we use narnoo_thumbColumns='4'; The variable '4' means that four thumb images from the album will be render in one row.

In example2-4 we use narnoo_thumbColumns='2'; The variable '2' means that four thumb images from the album will be render onto the page as in a 2 X 2 grid pattern.

narnoo_slideShow (Boolean)

This variable controls how each images preview (larger) image is displayed on the page. Once a thumb is pressed the higher resolution image appears on the page. There are two options for how they appear 1) Each image appears by itself in a lightbox or 2) A slide show appears with all the album images based on the additional variable narnoo_slideShowNumber

Example

```
narnoo_slideShow='yes';
narnoo_slideShowNumber='10';
```

The above example would render a slide show of 10 images from the album. What this means is, when any of the rendered thumbs are pressed, a slideshow appears that scrolls through 10 images from that album.

Image Slideshow - Inline with Page

UPLOAD - GRAB CODE - DISPLAY

Overview:

The Narnoo API for embedding a dynamic, flash image slideshow is as follows.

```
<script type='text/javascript'>
narnoo_operatorId='57';
narnoo_albumId = '83';
narnoo_domainId = '73';
narnoo_slideShowNumber='2';
narnoo_op_portal='yes';
narnoo_speed = '5';
narnoo_captionColor='660099';
narnoo_buttonColor='000099';
narnoo_numberColor='FFFF00';
narnoo_playerBgColor='339999';
narnoo_width= '600px';
narnoo_height= '500px';
narnoo_inPage = 'yes';
narnoo_slideshow='flash';</script>
<script type='text/javascript'
src='http://www.narnoo.com/singleEmbed/show.js'></script>
```

narnoo_operatorId (Integer)

This variable is static for each operator's account.

narnoo_albumId (Integer)

This variable represents the image album id.

narnoo_domainId (Integer)

This variable is static for each operator's account and represents their registered domain URL.

narnoo_slideshow (Static)

Represents a flash element.

narnoo_inPage (Boolean)

Represents whether the slideshow will appear inline with other content on the page.

narnoo_speed (Integer)

Represents the speed at which the images rotate.

narnoo_captionColor (hexnumber)

This variable is used to control the colour of the text captions. This number needs to represent a colour.

narnoo_buttonColor (hexnumber)

This variable is used to control the colour of the play and pause button. This number needs to represent a colour.

narnoo_numberColor (hexnumber)

This variable is used to control the colour of the image numbers. This number needs to represent a colour.

narnoo_playerBgColor (hexnumber)

This variable is used to control the colour of the background. Used so that the slideshow blends into page when loading. This number needs to represent a colour.

narnoo_slideShowNumber (Integer)

This variable is used to control the number of images to show in slideshow

narnoo_width (Integer + px)

This variable is used to set the width of the element when displayed inline.

narnoo_height (Integer + px)

This variable is used to set the height of the element when displayed inline.

Image Slideshow - Render Icon In Page

UPLOAD - GRAB CODE - DISPLAY

Overview:

The Narnoo API for embedding a dynamic, flash image slideshow as an icon is as follows.

```
<script type='text/javascript'>
narnoo_operatorId='57';
narnoo_albumId = '83';
narnoo_domainId = '73';
narnoo_slideShowNumber='2';
narnoo_op_portal='yes';
narnoo_speed = '5';
narnoo_captionColor='660099';
narnoo_buttonColor='000099';
narnoo_numberColor='FFFF00';
narnoo_playerBgColor='339999';
narnoo_inPage = 'no';
narnoo_slideshow='flash';</script>
<script type='text/javascript'
src='http://www.narnoo.com/singleEmbed/show.js'></script>
```

Alterations to inline code:

narnoo_inPage (Boolean- Yes/No)

Set this variable to `no`

Media Library

Our integrated media library is a streamline application for operators to distribute their High resolution media files.

Through the media library, Operator's can offer downloads of their highest resolution image files, HD quality videos and high resolution PDFs. All files that are added to the Narnoo platform are automatically added to the operator's media library. This provides a streamlined and simple process for operators to manage there media. Coupled with our simple '1-click' upload and processing function, any operator will be able to maintain this library themselves.

There are no limits to the number of files that can be added to this library. Individual video files however, can not be larger then 2 gig.

Through the Narnoo platform it is possible to password protect this media library. Operators can create usernames and passwords for specific users, thereby controlling who gets access to their high resolution media. If the web developer chooses to use their own security measures, then the library can be left open and placed behind the developer's secure pages.

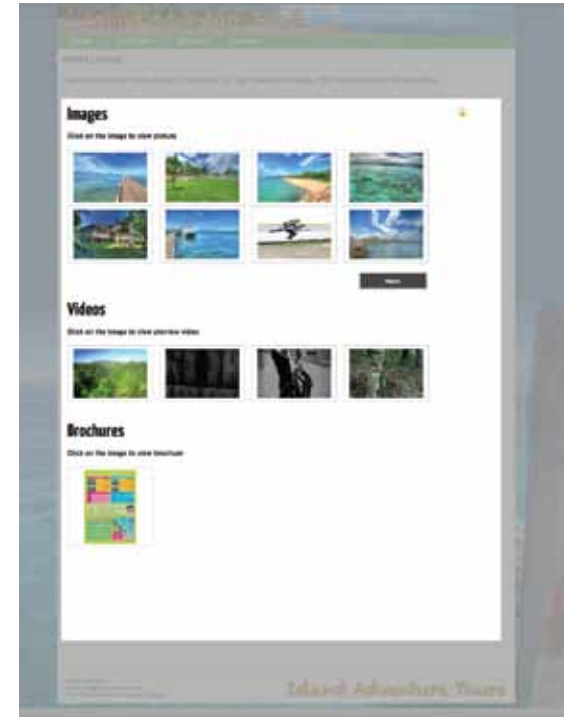
The media library is designed so that it everything fits within 800 px in width. This makes for easy integration into any page design.

Example Integration.
Integrated through an iFrame.

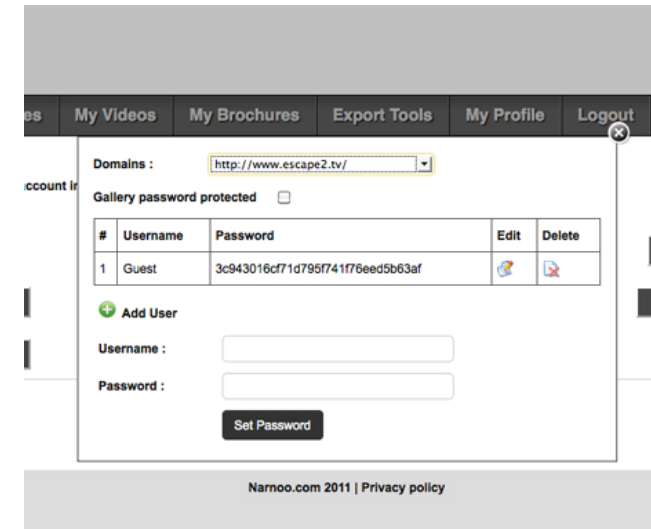
```
<iframe src='http://www.narnoo.com/embed/embed.php?domain_id=48' width='100%' height='100%' frameborder='0'></iframe>
```

domian_id (Integer)

This variable is static for each operator's account and represents their registered domain URL.



Media Library Layout



Media Library Settings

Example One

Video embed parameters

```
<script type='text/javascript'>
narnoo_operatorId = '39';
narnoo_videoId = '190';
narnoo_inPage = 'yes';
narnoo_lightbox='no';
narnoo_domainId = '48';
narnoo_width = '543px';
narnoo_height = '304px';
narnoo_autoStart = 'false';
narnoo_op_portal='yes';
</script>
<script type='text/javascript'
src='http://www.narnoo.com/singleEmbed/show.js'> </script>
```

Brochure embed parameters

```
<script type='text/javascript'>
narnoo_operatorId= '39';
narnoo_brochureId = '208';
narnoo_domainId = '48';
narnoo_op_portal='yes';
</script>
<script type='text/javascript'
src='http://www.narnoo.com/singleEmbed/show.js'> </script>
```

Image embed parameters

```
<script type='text/javascript'>
narnoo_operatorId='39';
narnoo_albumId = '18';
narnoo_domainId = '48';
narnoo_thumbDisplay='4';
narnoo_thumbColumns='4';
narnoo_slideShow='no';
narnoo_op_portal='yes';
</script>
<script type='text/javascript'
src='http://www.narnoo.com/singleEmbed/show.js'> </script>
```

Inline Video - Image Thumb Row -Brochure



Example Two

Video embed parameters

```
<script type='text/javascript'>
narnoo_operatorId = '39';
narnoo_videoId = '190';
narnoo_inPage = 'yes';
narnoo_lightbox='yes';
narnoo_domainId = '48';
narnoo_width = '263px';
narnoo_height = '174px';
narnoo_op_portal='yes';
</script>
<script type='text/javascript'
src='http://www.narnoo.com/singleEmbed/show.js'> </script>
```

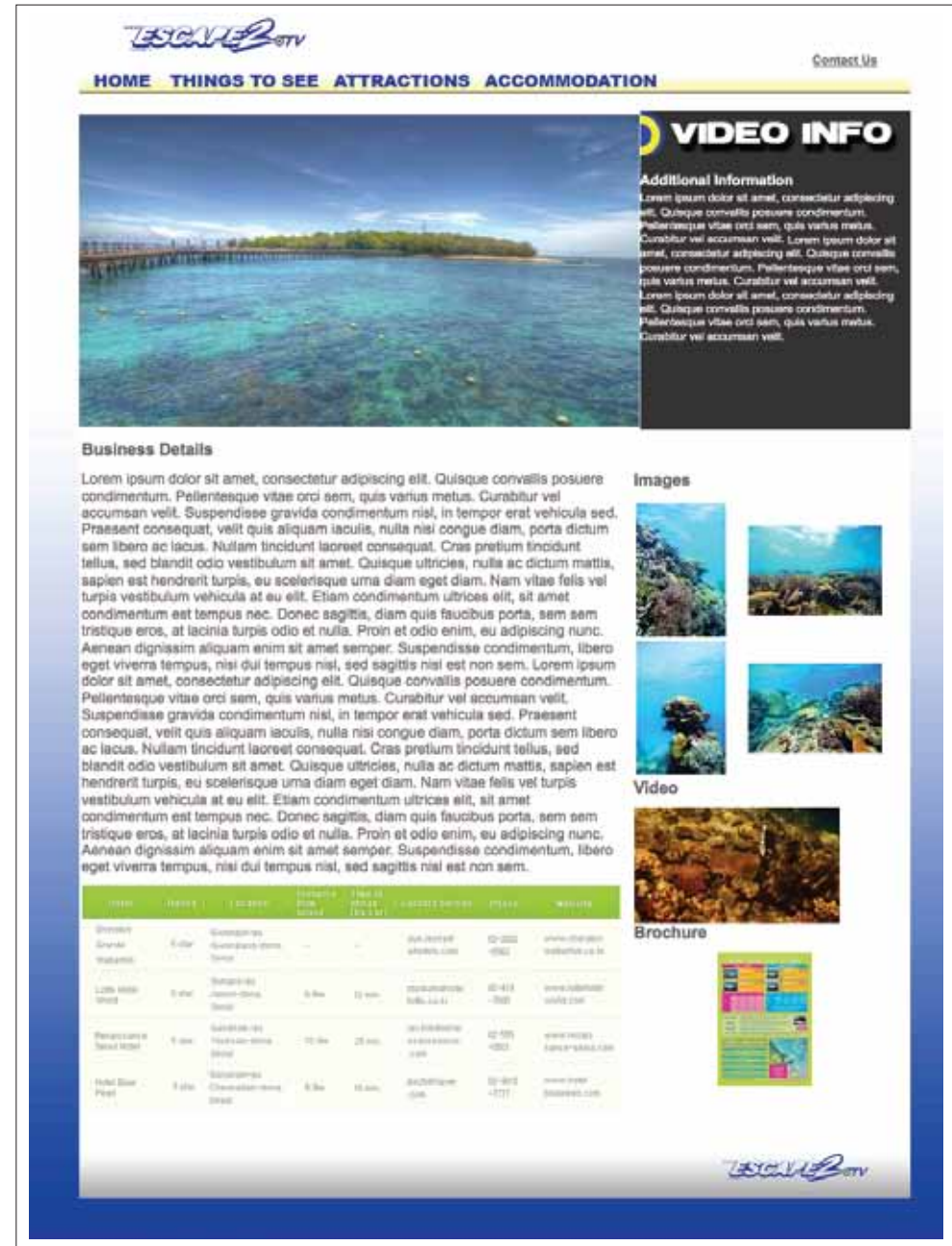
Brochure embed parameters

```
<script type='text/javascript'>
narnoo_operatorId= '39';
narnoo_brochureId = '208';
narnoo_domainId = '48';
narnoo_op_portal='yes';
</script>
<script type='text/javascript'
src='http://www.narnoo.com/singleEmbed/show.js'> </script>
```

Image embed parameters

```
<script type='text/javascript'>
narnoo_operatorId='39';
narnoo_albumId = '18';
narnoo_domainId = '48';
narnoo_thumbDisplay='4';
narnoo_thumbColumns='2';
narnoo_slideShow='no';
narnoo_op_portal='yes';
</script>
<script type='text/javascript'
src='http://www.narnoo.com/singleEmbed/show.js'> </script>
```

Video Thumb(open in lightbox) - Image Grid -Brochure



Example Three

Video embed parameters

```
<script type='text/javascript'>
narnoo_operatorId = '39';
narnoo_videoId = '190';
narnoo_inPage = 'no';
narnoo_domainId = '48';
narnoo_op_portal='yes';
</script>
<script type='text/javascript'
src='http://www.narnoo.com/singleEmbed/show.js'> </script>
```

Image embed parameters

```
<script type='text/javascript'>
narnoo_operatorId='39';
narnoo_albumId = '18';
narnoo_domainId = '48';
narnoo_thumbDisplay='4';
narnoo_thumbColumns='2';
narnoo_slideShow='no';
narnoo_op_portal='yes';
</script>
<script type='text/javascript'
src='http://www.narnoo.com/singleEmbed/show.js'> </script>
```

Brochure embed parameters

```
<script type='text/javascript'>
narnoo_operatorId= '39';
narnoo_brochureId = '208';
narnoo_domainId = '48';
narnoo_op_portal='yes';
</script>
<script type='text/javascript'
src='http://www.narnoo.com/singleEmbed/show.js'> </script>
```

Video Icon(Open in lightbox) - Image Grid -Brochure



Example Four

Video Light Box - Window Centered

ESCAPE2@TV

HOME THINGS TO SEE ATTRACTIONS ACCOMMODATION

Contact Us

VIDEO INFO

Video
Click on thumb to view Video.

Business Details

Images

Hotel	Rating	Location	Distance (km)	Time to reach (by car)	Contact person	Phone	Website
Sheraton Grande Wakuhi	5 star	Gwangju-dong, Seoul	-	-	sun.jeong@whotel.com	02-2022-0562	www.sheratonwakuhi.co.kr
Lotte Hotel World	5 star	Songpa-gu, Jamsil-dong, Seoul	4.8km	12 min.	stark@lottehotels.co.kr	02-478-7000	www.lottehotels.com
Renaisance Seoul Hotel	5 star	Gangnam-gu, Yoksam-dong, Seoul	12.1km	25 min.	jo.kw@renaisance.com	02-505-0501	www.renaissanceseoul.com
Hotel Blue Pearl	3 star	Gangnam-gu, Cheongdam-dong, Seoul	5.3km	15 min.	do25@naver.com	02-3015-1771	www.hotelbluepearl.com

ESCAPE2@TV

Brochure Ligh Box - Window Centered

ESCAPE2@TV

HOME THINGS TO SEE ATTRACTIONS ACCOMMODATION

Contact Us

VIDEO INFO

Image Slideshow
A collection of our images:

Business Details

Business Media

Green Island Great Barrier Reef

Full & Half Day Cruises from \$75

Bookings: (02) 4051 0404

www.greenisland.com.au

ESCAPE2@TV

Example Five


Media Library - Vertical Menu Fit

HEADER

Navigation Bar

Images


Click on the image to view picture



Next


Videos

Click on the image to view preview video



Brochures

Click on the image to view brochure




Media Library - Horizontal Menu Fit

HEADER

Navigation Bar

Images


Click on the image to view picture



Next


Videos

Click on the image to view preview video



Brochures

Click on the image to view brochure



Example Six

Media Library - Log In Window

Gallery Login


Username :

Password :

Media Library - Download Preview/Button


Images

Click on the image to view picture




Videos

Click on the image to view



Brochures

Click on the image to view brochure



Example Seven - Image Slideshow

Slide show embed parameters

```
<script type='text/javascript'>
narnoo_operatorId='31';
narnoo_albumId = '18';
narnoo_domainId = '81';
narnoo_slideShowNumber='4';
narnoo_op_portal='yes';
narnoo_speed = '5';
narnoo_captionColor='660099';
narnoo_buttonColor='000099';
narnoo_numberColor='FFFF00';
narnoo_playerBgColor='339999';
narnoo_width = '543px';
narnoo_height= '304px';
narnoo_inPage = 'yes';
narnoo_slideshow='flash'; </script>
<script type='text/javascript'
src='http://www.narnoo.com/singleEmbed/show.js'> </script>
```

Inline Album Slideshow



Video Player Settings

The Narnoo video player has a number of customisable elements programmed into it.

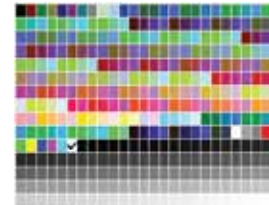
Control UI - Can set the controls to be the colour of your choice.

Logo Watermark - Can upload a logo that will be the watermark on your video player.

Linkage - control what happens when a user clicks on your video player. Send them to a page of your choosing. For example - to the books page.



Logo Watermark



Color Settings



URL

Configurations are set through the Narnoo portal



Colour and Linkage Settings



Watermark Upload Settings

Slideshow Player Settings

The Narnoo Slideshow player has a number of customisable elements programmed into it.

Dimensions:

The player automatically adjusts itself depending on it's embed size. These adjustments include:

Large sized players - Embed Width ≥ 400 px:
Displays all the captions, numbers and play/pause button

Medium sized player - Embed Width ≥ 330 & Embed Width < 400 :
Hides the caption but shows numbers and play/pause button

Small sized player - Embed Width < 330 :
Hides the caption, numbers and play/pause button

Customisable Colour Schemes:

You can control all the colour settings for the slideshow player.

Caption Colours: Set the colour of the displayed captions

Button Colours: Set the colour of the play and paused buttons

Number Colours: Set the colour of the numbers

Player Background Colour: Set the players default background colour so it blends in with your page while loading.

Slide Show Speed

Set the speed at which the images will automatically scroll.



www.narnoo.com

1300 40 60 71

info@narnoo.com

