

TM



**NARNOO**

**API**

**DOCUMENTATION**

**For Tourism Websites**

**Videos**

**Brochures**

**Images**

**Agent Portals**

# Document Contents

---

## Narnoo API Documentation Contents

**Document Overview**

**Mobile Content Overview**

**Image API Code**

**Brochure API Code**

**Video API Code**

**Slideshow API Code**

**CMS Gallery API Code**

**Example One - Inline video, brochure, image thumbs (row)**

**Example Two -Video thumb (open in light box), brochure, image in grid pattern**

**Example Three -Video icon (open in light box), brochure, image in grid pattern**

**Example Four -Video Lightbox, brochure light box**

**Example Five -Media library layout**

**Example Five A -Media library Code and Users**

**Example Six - CMS Gallery**

**Example Seven - Distributor Slideshow**

**Video Settings**

**Slideshow Settings**

# Overview

---

## Narnoo API Documentation

### Overview

The Narnoo API is used to embed media content that has been uploaded and processed via the Narnoo.com service.

### Requirements

A Narnoo.com distributor account

Uploaded content or a populated list of operators - Needed so that a distributor can display an operator's content.

### Issues

- \* The API code is entered into a site's html in the exact location where the media is to be displayed.
- \* The Narnoo.com portal displays the appropriate embed codes. However, you can custom the variables based in this documentation.
- \* Where desired, thumb nail images are produced for images, videos and brochures.
- \* All ID numbers can be found on the Narnoo.com portal.
- \* An XML file can be downloaded that contains all operator's content ID numbers and business GeoLocation Data.

### Examples

This document contains a number of examples. These examples show the different number of ways to render the content on a site page. These example pages have basic styling so that the emphasise is on how the content is rendered in a browser window and not the page itself.

# Overview

---

## Narnoo API Documentation

### Mobile Device Display

All embeddable content has alternative **HTML5** accessible content.

This means that our code will automatically output the correct media files depending on the user's browser.

There are **NO** issues with showing the media content across computer, mobile phones or tablets based web browsers.

# Images - Distributor Albums

## Overview:

The Narnoo API for embedding images into a distributor's site is quite simple and easy to manage. The variables can be set, allowing the distributor the freedom to customise how the images appear on their site pages.

### Example Parameters:

```
<script type='text/javascript'>
narnoo_distributorId = '33';
narnoo_albumId = '2';
narnoo_domainId = '31';
narnoo_thumbDisplay='5';
narnoo_thumbColumns='5';
narnoo_slideShow='no';
narnoo_dst_portal='yes';
</script> <script type='text/javascript'
src='http://www.narnoo.com/singleEmbed/show.js'></script>
```

## narnoo\_distributorId (Integer)

This variable is static for each distributor's account.

## narnoo\_albumId (Integer)

This variable represents the image album id. To embed images onto site pages, distributors need to upload their own images and create albums of these images. They then use the album code to embed these images into their site.

Extending this code is the ability for the distributor's to enter their operators' image album id. This will render that operator's image album into the distributor's site page.

## narnoo\_domainId (Integer)

This variable is static for each distributor's account and represents their registered domain URL.

## narnoo\_thumbDisplay (Integer)

This variable controls the number of thumb images rendered onto the site page.

## UPLOAD - GRAB CODE -DISPLAY

### Example

In example1 we use narnoo\_thumbDisplay='5'; The variable '5' means that five images from the album will be render onto the page as thumb images.

In example2-4 we use narnoo\_thumbDisplay='4'; The variable '4' means that four images from the album will be render onto the page as thumb images.

## narnoo\_thumbColumns (Integer)

This variable controls the number of columns that the images are rendered onto the site page. The thumbs can be controlled in a grid format.

### Example

In example1 we use narnoo\_thumbColumns='5'; The variable '5' means that the five thumb images from the album will be render in one row.

In example2-4 we use narnoo\_thumbColumns='2'; The variable '2' means that four thumb images from the album will be render onto the page as in a 2 X 2 grid pattern.

## narnoo\_slideShow (Boolean)

This variable controls how each images preview (larger) image is displayed on the page. Once a thumb is pressed the higher resolution image appears on the page. There are two options for how they appear 1) Each image appears by itself in a lightbox or 2) A slide show appears with all the album images based on the additional variable narnoo\_slideShowNumber

### Example

```
narnoo_slideShow='yes';
narnoo_slideShowNumber='10';
```

The above example would render a slide show of 10 images from the album. What this means is when any of the rendered thumbs are pressed a slideshow appears that scrolls through 10 images from that album.

# Images - Embed Operator Albums

## UPLOAD - GRAB CODE -DISPLAY

### Overview:

The Narnoo API for embedding operator's images into a distributor's site is quite simple and easy to manage. The variables can be set, allowing the distributor the freedom to customise how the images appear on their site pages.

#### Example Parameters:

```
<script type='text/javascript'>
narnoo_distributorId = '10';
narnoo_albumId = '34';
narnoo_domainId = '22';
narnoo_thumbDisplay=5';
narnoo_thumbColumns='2';
narnoo_slideShow='no';
narnoo_operatorId='39';
</script> <script type='text/javascript'
src='http://www.narnoo.com/singleEmbed/show.js'></script>
```

The only additional changes to the dynamic variables are:

#### **narnoo\_albumId (Integer)**

This variable represents the operators image album id. To embed images onto site pages, operators must upload images and create albums.

#### **narnoo\_operatorId (Integer)**

This variable is static for each operator's account.

# Brochures - Distributor

## UPLOAD - GRAB CODE -DISPLAY

### Overview:

The simple Narnoo API for embedding a flip book style brochure reader, is as follows. A small thumb of the first page of the brochure is rendered as a button to open brochure.

```
<script type='text/javascript'>
narnoo_distributorId= '39';
narnoo_brochureId = '208';
narnoo_light_shade = 'cccccc';
narnoo_dark_shade = '333333';
narnoo_link_url = 'http://www.narnoo.com/signup.php';
narnoo_domainId = '48';
narnoo_op_portal='yes';
narnoo_inPage = 'no';
</script>
<script type='text/javascript'
src='http://www.narnoo.com/singleEmbed/show.js'> </script>
```

### **narnoo\_distributorId (Integer)**

This variable is static for each distributor's account.

### **narnoo\_brochureId (Integer)**

This variable represents the brochure id. To embed brochures onto site pages, distributors need to upload their own PDF brochures into their Narnoo account. The system automatically processes the PDF's and converts them into this page flipping format. Distributors then enter the brochure ID code to embed the brochures into their site.

Extending this code is the ability for the distributor's to enter their operator's brochure ids. This will render that operator's brochure into the distributor's site page.

### **narnoo\_light\_shade (Hex Colour)**

This variable is used to set the lighter side of the navigation bar gradient.

### **narnoo\_dark\_shade (Hex Colour)**

This variable is used to set the darker side of the navigation bar gradient

### **narnoo\_link\_url (Full URL)**

This variable is used to create the custom call to action link.

### **narnoo\_domainId (Integer)**

This variable is static for each operator's account and represents their registered domain URL.

### **narnoo\_inPage (yes/no)**

This variable is used to determine whether an image thumb nail appears.

The first page of the PDF brochure will be rendered as a thumb nail in the position of this code on the page.

This thumb acts as a button that when pressed opens the flip book in a light box on the website page.

# Brochures - Embed Operator Brochure

## UPLOAD - GRAB CODE -DISPLAY

### Overview:

The simple Narnoo API for embedding an operator's brochure, is as follows.

```
<script type='text/javascript'>
narnoo_operatorId='92';
narnoo_distributorId= '39';
narnoo_brochureId = '208';
narnoo_light_shade = 'cccccc';
narnoo_dark_shade = '333333';
narnoo_link_url = 'http://www.narnoo.com/signup.php';
narnoo_domainId = '48';
narnoo_op_portal='yes';
narnoo_inPage = 'no';
</script>
<script type='text/javascript' src='http://www.narnoo.com/singleEmbed/show.js'></script>
```

The only additional changes to the dynamic variables are:

### **narnoo\_operatorId (Integer)**

This variable is static for each operator's account.

### **narnoo\_brochureId (Integer)**

This variable represents the operator's brochure id.

# Brochures - Distributor Inline Brochure

## UPLOAD - GRAB CODE -DISPLAY

### Overview:

The simple Narnoo API for embedding a flip book style brochure reader inline with the page content, is as follows.

```
<script type='text/javascript'>
narnoo_distributorId= '39';
narnoo_brochureId = '208';
narnoo_light_shade = 'cccccc';
narnoo_dark_shade = '333333';
narnoo_link_url ='http://www.narnoo.com/signup.php';
narnoo_domainId = '48';
narnoo_op_portal='yes';
narnoo_inPage='yes';
narnoo_width='850';
narnoo_height='588';
</script>
<script type='text/javascript' src='http://www.narnoo.com/singleEmbed/show.js'></script>
```

### **narnoo\_inPage (yes/no)**

This variable is used to notify whether the brochure is a thumb or rendered into page.

### **narnoo\_width (Integer)**

This variable controls the width of the brochure player.

### **narnoo\_height (Integer)**

This variable controls the height of the brochure player.

# Brochures - Distributor Inline Operator's Brochure

## UPLOAD - GRAB CODE -DISPLAY

### Overview:

The simple Narnoo API for embedding a flip book style brochure reader inline with the page content, is as follows.

```
<script type='text/javascript'>
narnoo_operatorId='95';
narnoo_distributorId= '39';
narnoo_brochureId = '208';
narnoo_light_shade = 'cccccc';
narnoo_dark_shade = '333333';
narnoo_link_url = 'http://www.narnoo.com/signup.php';
narnoo_domainId = '48';
narnoo_op_portal='yes';
narnoo_inPage='yes';
narnoo_width='850';
narnoo_height='588';
</script>
<script type='text/javascript' src='http://www.narnoo.com/singleEmbed/show.js'></script>
```

The only additional changes to the dynamic variables are:

### **narnoo\_operatorId (Integer)**

This variable is static for each operator's account.

### **narnoo\_brochureId (Integer)**

This variable represents the operator's brochure id.

# Videos - Distributor

## Overview:

The Narnoo API for embedding videos into a distributor's website provides the highest level of customisation of all media content in the system. Essentially there are three ways to embed a video into a site page. This allows for easy embedding into any page design.

The three major embed styles are as follows:

**Inline video** - Similar to sites like "Vimeo" and "YouTube" where video plays along side content in a site page.

**Thumb Image to light box** - A thumb image is produced that when pressed opens the video in a light box in the page.

**Link Icon to light box** - An icon is rendered that when pressed opens the video in a light box in the page.

### Example Parameters:

```
<script type='text/javascript'>
narnoo_distributorId = '33';
narnoo_videoId = '196';
narnoo_inPage = 'yes';
narnoo_lightbox='no';
narnoo_domainId = '31';
narnoo_width = '100px';
narnoo_height = '100px';
narnoo_autoStart = 'false'
narnoo_dst_portal='yes';
</script> <script type='text/javascript'
src='http://www.narnoo.com/singleEmbed/show.js'></script>
```

## UPLOAD - GRAB CODE -DISPLAY

### narnoo\_distributorId (Integer)

This variable is static for each distributor's account.

### narnoo\_videoId (Integer)

This variable represents the video id. To embed videos into site pages, distributors need to upload their own videos into their Narnoo account. The system automatically processes the videos and converts them to a streaming and also a HD downloadable video file. Distributors then enter the video ID code to embed the video into their site.

Extending this code is the ability for the distributor's to enter their operator's video ids. This will render that operator's video into the distributor's site page.

### narnoo\_inPage (boolean)

This variable is used to render a thumb image of the video into the site page. See examples for more details.

### narnoo\_lighbox (boolean)

This variable is used to determine how the video will appear on the page once a thumb image has been pressed. If the variable is set to 'yes' , then the video will open in a light box. If the variable is set to 'no' , then the video will play in the position of the thumb image. See examples for more details.

### narnoo\_domainId (Integer)

This variable is static for each distributor's account and represents their registered domain URL.

### narnoo\_width (Integer + px)

This variable controls the width of the video player when narnoo\_inPage = ' yes'. See examples for more details.

### narnoo\_height (Integer + px)

This variable controls the height of the video player when narnoo\_inPage = ' yes'. See examples for more details.

# Videos - Embed Operator Video

## UPLOAD - GRAB CODE -DISPLAY

### Overview:

The Narnoo API for embedding operator's videos into a distributor's website is as follows:

#### Example Parameters:

```
<script type='text/javascript'>
narnoo_operatorId = '60';
narnoo_distributorId = '33';
narnoo_videoId = '349';
narnoo_inPage = 'yes';
narnoo_lightbox='no';
narnoo_domainId = '31';
narnoo_width = '100px';
narnoo_height = '100px';
narnoo_autoStart = 'false'
narnoo_portal = 'yes';
</script> <script type='text/javascript'
src='http://www.narnoo.com/singleEmbed/show.js'></script>
```

The only additional changes to the dynamic variables are:

### **narnoo\_operatorId (Integer)**

This variable is static for each operator's account.

### **narnoo\_videoId (Integer)**

This variable represents the operators video id. To embed videos into site pages, operators need to upload their own videos into their Narnoo account.

### UPDATE TO API

#### **narnoo\_autoStart (boolean)**

This variable is used to autostart the video. Only effects the flash version of the video.

# Videos - Link Icon

---

## Overview:

To embed a distributor video with a link into the website. Simply set the narnoo\_inPage variable to 'no'.

### Example Parameters:

```
<script type='text/javascript'>
narnoo_distributorId = '33';
narnoo_videoId = '196';
narnoo_inPage = 'no';
narnoo_domainId = '31';
narnoo_dst_portal='yes';
</script> <script type='text/javascript'
src='http://www.narnoo.com/singleEmbed/show.js'> </script>
```

## UPLOAD - GRAB CODE -DISPLAY

## Overview:

To embed an operators video into the distributors site with a link video with a link.

### Example Parameters:

```
<script type='text/javascript'>
narnoo_operatorId = '60';
narnoo_distributorId = '33';
narnoo_videoId = '349';
narnoo_inPage = 'no';
narnoo_domainId = '31';
</script> <script type='text/javascript'
src='http://www.narnoo.com/singleEmbed/show.js'> </script>
```

# Image Slideshow - Distributor Albums

## UPLOAD - GRAB CODE -DISPLAY

### Overview:

The Narnoo API for embedding a dynamic, flash image slideshow is as follows.

```
<script type='text/javascript'>
narnoo_distributorId = '41';
narnoo_albumId = '1';
narnoo_domainId = '39';
narnoo_slideshow='flash';
narnoo_inPage = 'yes';
narnoo_speed = '5';
narnoo_captionColor='660099';
narnoo_buttonColor='000099';
narnoo_numberColor='FFFF00';
narnoo_playerBgColor='339999';
narnoo_slideShowNumber = '4';
narnoo_width= '600px';
narnoo_height= '500px';
narnoo_dst_portal='yes';
</script>
<script type='text/javascript'
src='http://www.narnoo.com/singleEmbed/show.js'></script>
```

### narnoo\_distributorId (Integer)

This variable is static for each distributor's account.

### narnoo\_albumId (Integer)

This variable represents the image album id.

### narnoo\_domainId (Integer)

This variable is static for each distributor's account and represents their registered domain URL.

### narnoo\_slideshow (Static)

Represents a flash element.

### narnoo\_inPage (Boolean)

Represents whether the slideshow will appear inline with other content on the page.

### narnoo\_speed (Integer)

Represents the speed at which the images rotate.

### narnoo\_captionColor (hexnumber)

This variable is used to control the colour of the text captions. This number needs to represent a colour.

### narnoo\_buttonColor (hexnumber)

This variable is used to control the colour of the play and pause button. This number needs to represent a colour.

### narnoo\_numberColor (hexnumber)

This variable is used to control the colour of the image numbers. This number needs to represent a colour.

### narnoo\_playerBgColor (hexnumber)

This variable is used to control the colour of the background. Used so that the slideshow blends into page when loading. This number needs to represent a colour.

### narnoo\_slideShowNumber (Integer)

This variable is used to control the number of images to show in slideshow

### narnoo\_width (Integer + px)

This variable is used to set the width of the element when displayed inline.

### narnoo\_height (Integer + px)

This variable is used to set the height of the element when displayed inline.

# Image Slideshow - Embed Operator Albums

## UPLOAD - GRAB CODE -DISPLAY

### Overview:

The Narnoo API for embedding operator's slideshows into distributor sites is as follows.

```
<script type='text/javascript'>
narnoo_distributorId = '41';
narnoo_albumId = '83';
narnoo_domainId = '39';
narnoo_slideShowNumber='4';
narnoo_operatorId='57';
narnoo_slideshow='flash';
narnoo_inPage = 'yes';
narnoo_speed = '5';
narnoo_captionColor='660099';
narnoo_buttonColor='000099';
narnoo_numberColor='FFFF00';
narnoo_playerBgColor='339999';
narnoo_slideShowNumber = '4';
narnoo_width= '600px';
narnoo_height= '500px';
</script>
<script type='text/javascript'
src='http://www.narnoo.com/singleEmbed/show.js'></script>
```

The only additional changes to the dynamic variables are:

### **narnoo\_operatorId (Integer)**

This variable is static for each operator's account.

### **narnoo\_albumId (Integer)**

This variable represents the operator's image album id.

# Image Slideshow - Link Icon

## UPLOAD - GRAB CODE -DISPLAY

### Overview:

The Narnoo API for embedding the distributor's slideshows with a link icon is as follows.

```
<script type='text/javascript'>
narnoo_distributorId = '41';
narnoo_albumId = '1';
narnoo_domainId = '39';
narnoo_slideshow='flash';
narnoo_inPage = 'no';
narnoo_speed = '5';
narnoo_captionColor='660099';
narnoo_buttonColor='000099';
narnoo_numberColor='FFFF00';
narnoo_playerBgColor='339999';
narnoo_slideShowNumber = '4';
narnoo_dst_portal='yes';
</script>
<script type='text/javascript'
src='http://www.narnoo.com/singleEmbed/show.js'> </script>
```

Alterations to the standard code:

### **narnoo\_inPage (Boolean- Yes/No)**

Set this variable to 'no'

### Overview:

The Narnoo API for embedding an operator's slideshows into a distributor's webstie with a link icon, is as follows.

```
<script type='text/javascript'>
narnoo_distributorId = '41';
narnoo_albumId = '83';
narnoo_domainId = '39';
narnoo_slideShowNumber='4';
narnoo_operatorId='57';
narnoo_slideshow='flash';
narnoo_speed = '5';
narnoo_captionColor='660099';
narnoo_buttonColor='000099';
narnoo_numberColor='FFFF00';
narnoo_playerBgColor='339999';
narnoo_inPage = 'no';
narnoo_dst_portal = 'yes';
</script>
<script type='text/javascript'
src='http://www.narnoo.com/singleEmbed/show.js'> </script>
```

Alterations to the standard code:

### **narnoo\_inPage (Boolean- Yes/No)**

Set this variable to 'no'

### **narnoo\_operatorId (Integer)**

This variable is static for each operator's account.

### **narnoo\_albumId (Integer)**

This variable represents the operator's image album id.

# Distributor - Members Area Gallery

## UPLOAD - GRAB CODE -DISPLAY

### Overview:

We provide API for distributor's to embed an interface into their members area of their CMS. This allows the member to see their uploaded media within Narnoo and also their Media ID numbers. This allows the member to easily display their content on the distributor's site. This API also allows a member to upload media directly into their Narnoo account from the distributor's website.

### Example video content

```
<script type='text/javascript'>
narnoo_distributorId = '33';
narnoo_domainId = '31';
narnoo_gallery = 'mini';
narnoo_operatorId = '60';
narnoo_content = 'video';
</script>
<script type='text/javascript'
src='http://www.narnoo.com/singleEmbed/show.js'></script>
```

### narnoo\_distributorId (Integer)

This variable is static for each distributor's account.

### narnoo\_domainId (Integer)

This variable is static for each distributor's account and represents their registered domain URL.

### narnoo\_gallery (Static)

This variable is static to identify that this is a mini gallery.

### narnoo\_operatorId (Integer)

This variable is dynamic and represents the operator account.

### narnoo\_content (word "video' or 'brochure')

This variable is used to represent what content to display.

### Example brochure content

```
<script type='text/javascript'>
narnoo_distributorId = '33';
narnoo_domainId = '31';
narnoo_gallery = 'mini';
narnoo_operatorId = '60';
narnoo_content = 'brochure';
</script>
<script type='text/javascript'
src='http://www.narnoo.com/singleEmbed/show.js'></script>
```

# Example One

## Image embed parameters

```
<script type='text/javascript'>
narnoo_distributorId = '33';
narnoo_albumId = '2';
narnoo_domainId = '31';
narnoo_thumbDisplay='4';
narnoo_thumbColumns='4';
narnoo_slideShow='no';
narnoo_dst_portal='yes';
</script> <script type='text/javascript'
src='http://www.narnoo.com/singleEmbed/show.js'></script>
```

## Brochure embed parameters

```
<script type='text/javascript'>
narnoo_distributorId = '33';
narnoo_brochureId = '35';
narnoo_domainId = '31';
narnoo_dst_portal='yes';
narnoo_inPage = 'no';
</script> <script type='text/javascript'
src='http://www.narnoo.com/singleEmbed/show.js'></script>
```

## Video embed parameters

```
<script type='text/javascript'>
narnoo_distributorId = '33';
narnoo_videoId = '196';
narnoo_inPage = 'yes';
narnoo_lightbox='no';
narnoo_domainId = '31';
narnoo_width = '543px';
narnoo_height = '304px';
narnoo_autoStart = 'false';
narnoo_dst_portal='yes';
</script> <script type='text/javascript'
```

# Inline Video - Image Thumb Row -Brochure



# Example Two

## Small Inline Video - Image Thumb Grid - Brochure

### Image embed parameters

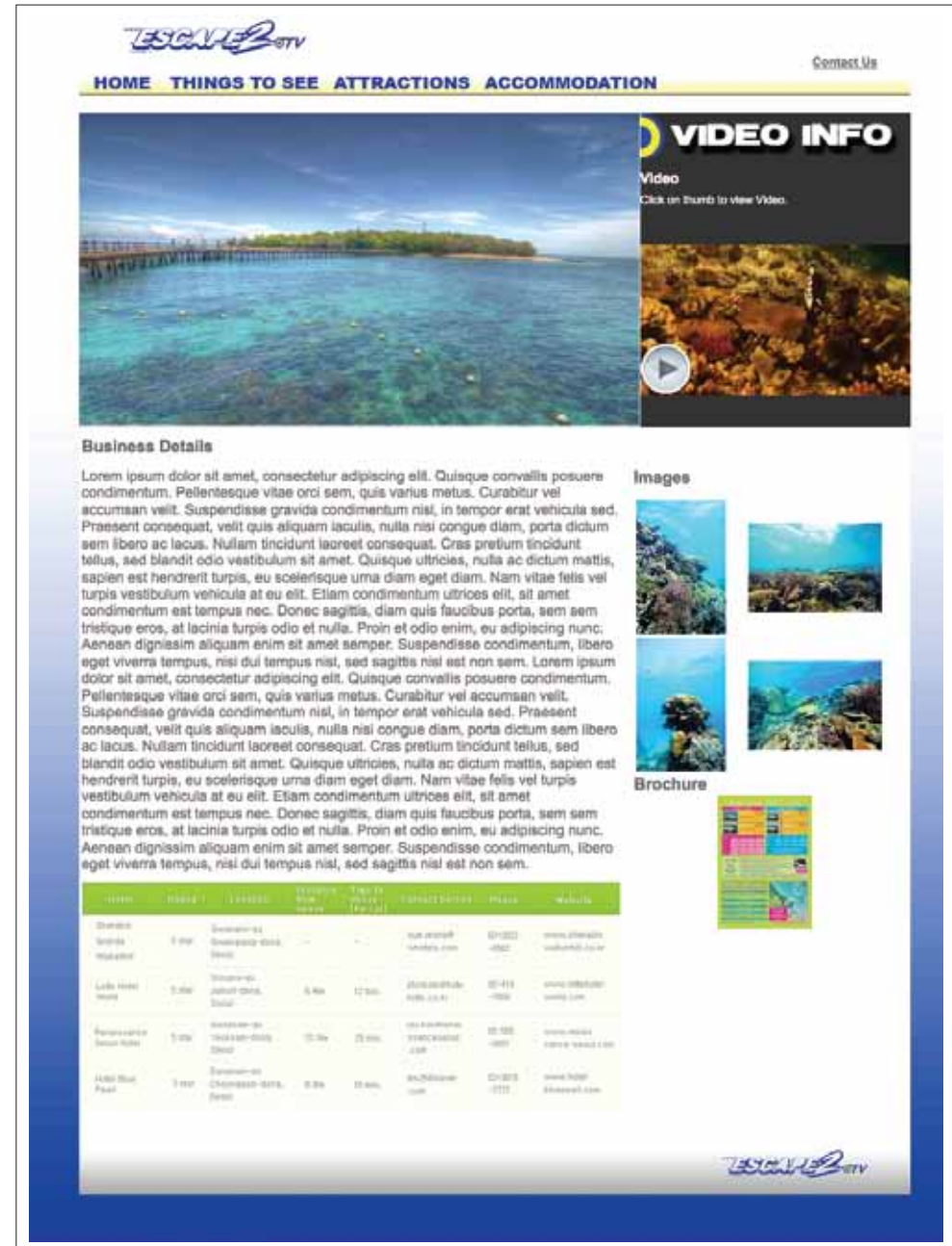
```
<script type='text/javascript'>
narnoo_distributorId = '33';
narnoo_albumId = '2';
narnoo_domainId = '31';
narnoo_thumbDisplay='4';
narnoo_thumbColumns='2';
narnoo_slideShow='no';
narnoo_dst_portal='yes';
</script> <script type='text/javascript'
src='http://www.narnoo.com/singleEmbed/show.js'></script>
```

### Brochure embed parameters

```
<script type='text/javascript'>
narnoo_distributorId = '33';
narnoo_brochureId = '35';
narnoo_domainId = '31';
narnoo_dst_portal='yes';
narnoo_inPage='no';
</script> <script type='text/javascript'
src='http://www.narnoo.com/singleEmbed/show.js'></script>
```

### Video embed parameters

```
<script type='text/javascript'>
narnoo_distributorId = '33';
narnoo_videoId = '196';
narnoo_inPage = 'yes';
narnoo_lightbox='yes';
narnoo_domainId = '31';
narnoo_width = '250px';
narnoo_height = '100px';
narnoo_dst_portal='yes';
</script> <script type='text/javascript'
src='http://www.narnoo.com/singleEmbed/show.js'></script>
```



# Example Three

## Video embed parameters

```
<script type='text/javascript'>
narnoo_distributorId = '33';
narnoo_videoId = '196';
narnoo_inPage = 'yes';
narnoo_lightbox='yes';
narnoo_domainId = '31';
narnoo_width = '250px';
narnoo_height = '100px';
narnoo_dst_portal='yes';
</script> <script type='text/javascript'
src='http://www.narnoo.com/singleEmbed/show.js'> </script>
```

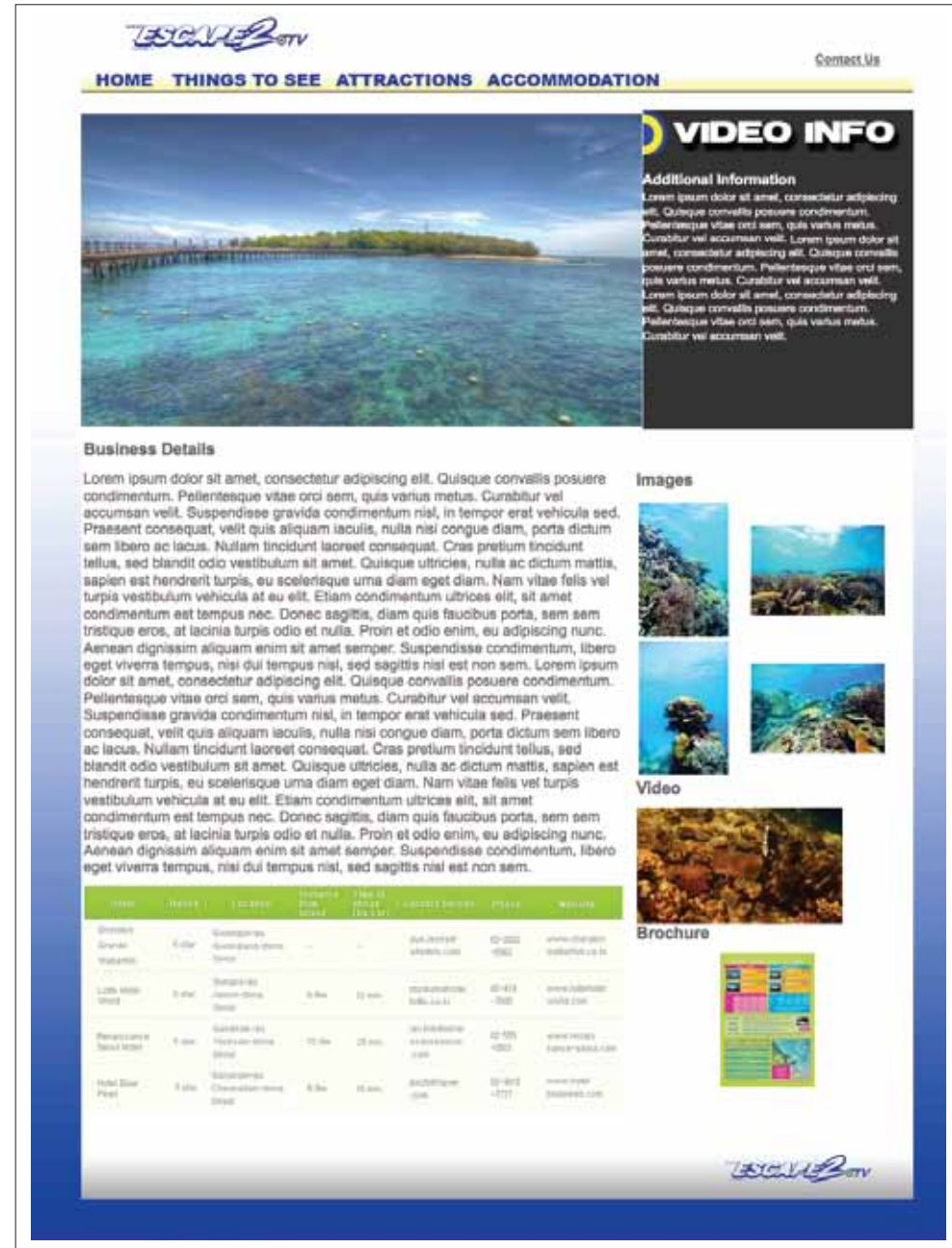
## Image embed parameters

```
<script type='text/javascript'>
narnoo_distributorId = '33';
narnoo_albumId = '2';
narnoo_domainId = '31';
narnoo_thumbDisplay='4';
narnoo_thumbColumns='2';
narnoo_slideShow='no';
narnoo_dst_portal='yes';
</script> <script type='text/javascript'
src='http://www.narnoo.com/singleEmbed/show.js'> </script>
```

## Brochure embed parameters

```
<script type='text/javascript'>
narnoo_distributorId = '33';
narnoo_brochureId = '35';
narnoo_domainId = '31';
narnoo_dst_portal='yes';
narnoo_inPage='no';
</script> <script type='text/javascript'
src='http://www.narnoo.com/singleEmbed/show.js'> </script>
```

## Inline Video Thumb - Image Thumb Grid - Brochure



# Example Four

## Video embed parameters

```
<script type='text/javascript'>
narnoo_distributorId = '33';
narnoo_videoId = '196';
narnoo_inPage = 'no';
narnoo_domainId = '31';
narnoo_dst_portal='yes';
</script> <script type='text/javascript'
src='http://www.narnoo.com/singleEmbed/show.js'></script>
```

## Image embed parameters

```
<script type='text/javascript'>
narnoo_distributorId = '33';
narnoo_albumId = '2';
narnoo_domainId = '31';
narnoo_thumbDisplay='4';
narnoo_thumbColumns='2';
narnoo_slideShow='yes';
narnoo_dst_portal='yes';
</script> <script type='text/javascript'
src='http://www.narnoo.com/singleEmbed/show.js'></script>
```

## Brochure embed parameters

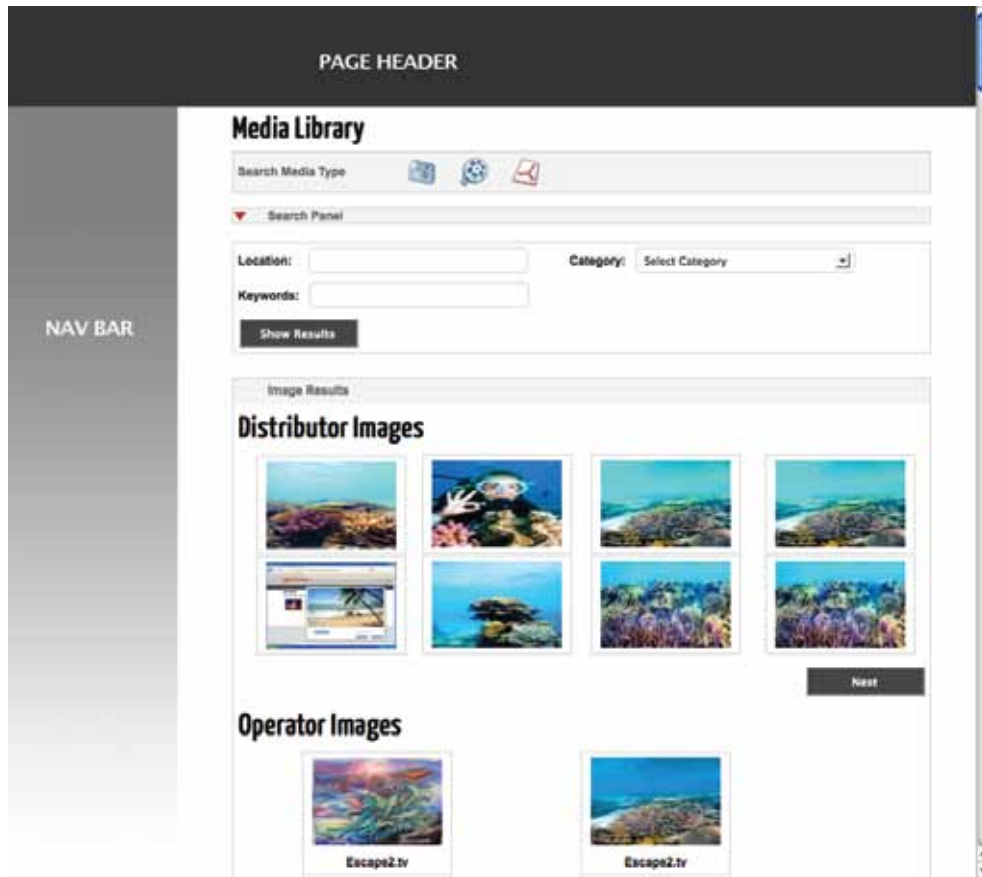
```
<script type='text/javascript'>
narnoo_distributorId = '33';
narnoo_brochureId = '35';
narnoo_domainId = '31';
narnoo_dst_portal='yes';
</script> <script type='text/javascript'
src='http://www.narnoo.com/singleEmbed/show.js'></script>
```

## Video Icon - Image Thumb Grid - Brochure



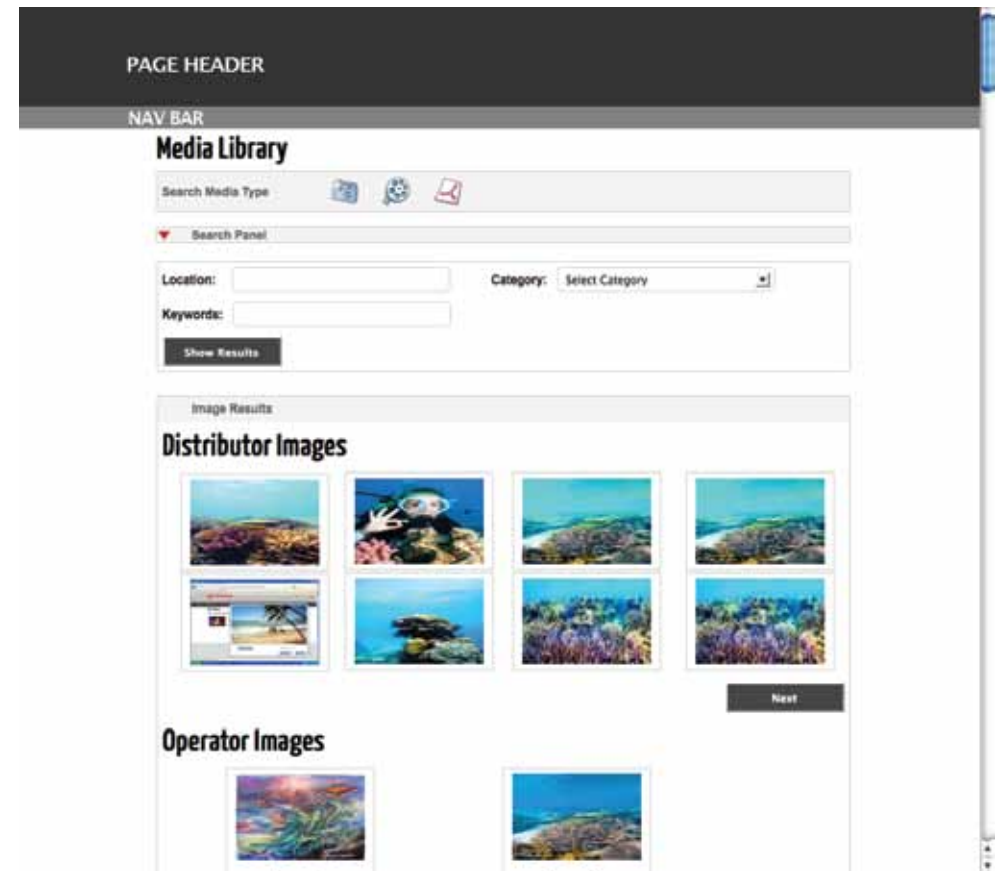
# Example Five

## Distributor Media Library Layouts



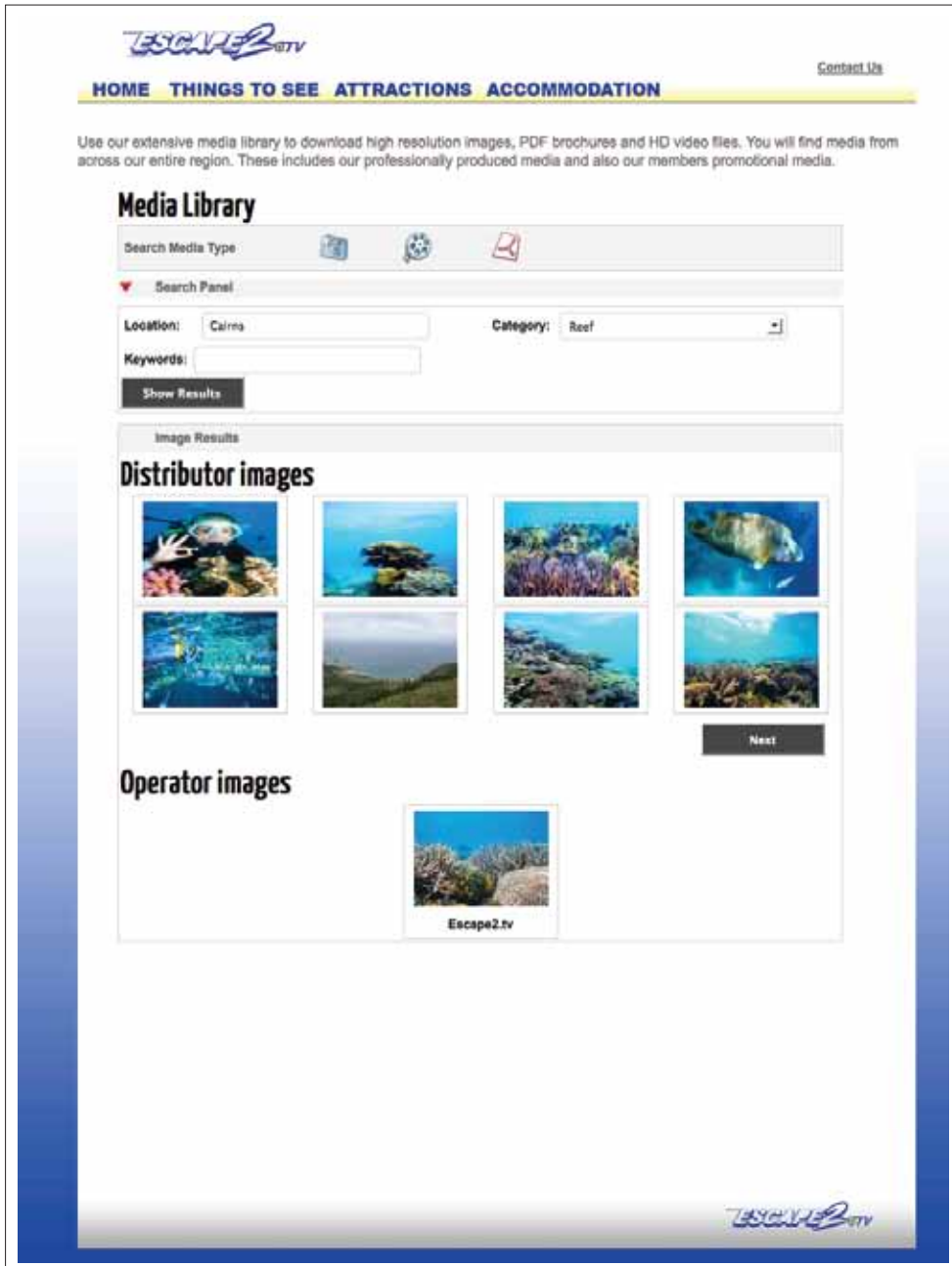
**Above:** The media library is designed so that it can easily be embedded into any page layout. This example shows that the library can be embedded into a page design with a left column navigation bar.

**Below:** The media library has a width of 800px so can easily be embedded into a page design with top page header navigation bar.



# Example Five A

## Distributor Media Library



### Media Library API - Public User

```
<iframe src='http://www.narnoo.com/embedDistributor/embedDst.php?domain_id=22
&user=6d3J0c/X' width='100%' height='900' style='border:solid 0px;'
frameborder="0"></iframe>
```

### Media Library API - Member User

```
<iframe src="http://www.narnoo.com/embedDistributor/embedDst.php?domain_id=22
&user=5s3Ux8vm&userId=23" width='100%' height='900' style='border:solid 0px;'
frameborder="0"></iframe>
```

### Media Library API - Super User

```
<iframe src="http://www.narnoo.com/embedDistributor/embedDst.php?domain_id=22
&user=7N3Xytg=&hash=8KRP3CM" width='100%' height='900' style='border:solid 0px;'
frameborder="0"></iframe>
```

FUNCTIONS	USERS				
	Public	Members	Media	Super	Manager
Upload Content	—	—	—	—	✓
Update Content	—	—	—	—	✓
Note Content	—	—	—	—	✓
Delete Content	—	—	—	—	✓
Search Content	✓	✓	✓	✓	✓
Include Operator Content	✓	—	✓	✓	✓
Download High Resolution Content	—	✓	✓	✓	✓
Create Image Albums	—	✓	—	✓	✓
Embed Brochures	—	✓	—	✓	✓
Embed Videos	—	✓	—	✓	✓

# Example Six

---

## Distributor CMS gallery

### Video Example

This gallery can be embedded within a distributor's CMS. It shows the operator the list of their videos within their Narnoo account.

The member can also upload content directly into their Narnoo account, which they can then display on the distributor's website.



### Brochure Example

This gallery can be embedded within a distributor's CMS. It shows the operator the list of their brochures within their Narnoo account.

The member can also upload content directly into their Narnoo account, which they can then display on the distributor's website.



# Example Seven - Distributor Slideshow

Image Slideshow embed parameters

```
<script type='text/javascript'>
narnoo_distributorId = '41';
narnoo_albumId = '1';
narnoo_domainId = '39';
narnoo_slideshow='flash';
narnoo_inPage = 'no';
narnoo_speed = '5';
narnoo_captionColor='660099';
narnoo_buttonColor='000099';
narnoo_numberColor='FFFF00';
narnoo_playerBgColor='339999';
narnoo_slideShowNumber = '4';
narnoo_dst_portal='yes';
</script>
<script type='text/javascript'
src='http://www.narnoo.com/singleEmbed/show.js'></script>
```

# Inline Album Slideshow



# Video Player Settings

The Narnoo video player has a number of customisable elements programmed into it.

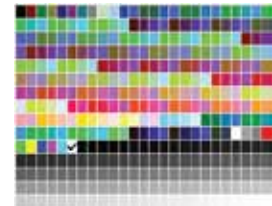
**Control UI** - Can set the controls to be the colour of your choice.

**Logo Watermark** - Can upload a logo that will be the watermark on your video player.

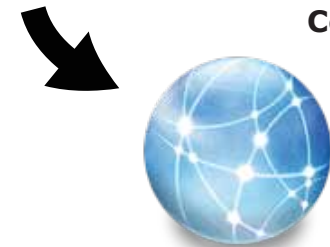
**Linkage** - control what happens when a user clicks on your video player. Send them to a page of your choosing. For example - to the books page.



Logo Watermark



Color Settings



URL

Configurations are set through the Narnoo portal



Colour and Linkage Settings



Watermark Upload Settings

# Slideshow Player Settings

---

The Narnoo Slideshow player has a number of customisable elements programmed into it.

## Dimensions:

The player automatically adjusts itself depending on it's embed size. These adjustments include:

**Large sized players** - Embed Width  $\geq$  400px:  
Displays all the captions, numbers and play/pause button

**Medium sized player** - Embed Width  $\geq$  330 & Embed Width  $<$  400:  
Hides the caption but shows numbers and play/pause button

**Small sized player** - Embed Width  $<$  330:  
Hides the caption, numbers and play/pause button

## Customisable Colour Schemes:

You can control all the colour settings for the slideshow player.

**Caption Colours:** Set the colour of the displayed captions

**Button Colours:** Set the colour of the play and paused buttons

**Number Colours:** Set the colour of the numbers

**Player Background Colour:** Set the players default background colour so it blends in with your page while loading.

## Slide Show Speed

Set the speed at which the images will automatically scroll.



**www.narnoo.com**

**1300 40 60 71**

**info@narnoo.com**

